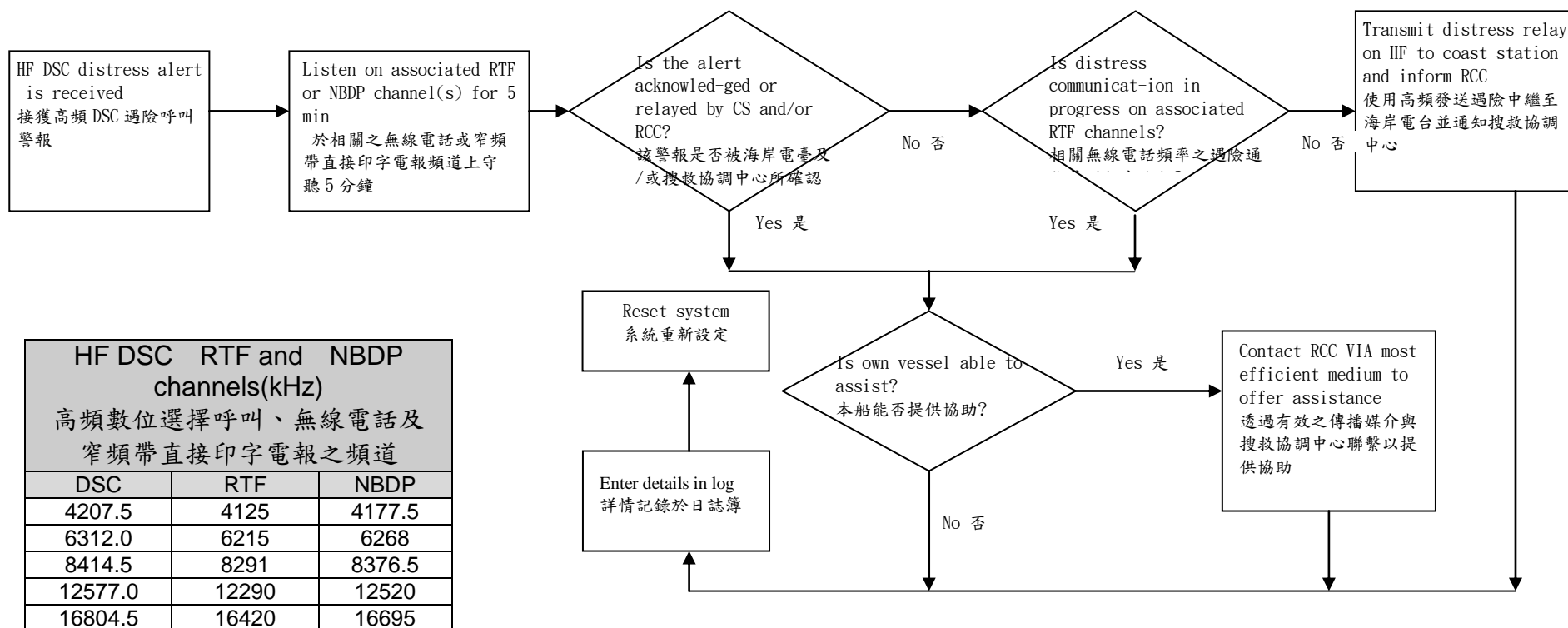


附件 二 船舶接獲高頻數位選擇呼叫遇險警報作業流程

Actions by Ships Upon Reception of HF DSC Distress Alert



Remarks 備註：

- If it is clear the ship or persons in distress are not in the vicinity and/or other crafts are better placed to assist, superfluous communications which could interfere with search and rescue activities are to be avoided. Details should be recorded in the appropriate logbook.
如果清楚知道遇險船舶或人員不在附近及/或其他船艇更適合前往協助，應避免不必要之通信以干擾搜救行動，該詳情應紀錄於適當日誌簿上。
- The ship should establish communications with the station controlling the distress as directed and render such assistance as required and appropriate.
船舶應依指示與控制遇險之電臺建立通信，使援助適當地符合需求。
- Distress relay calls should be initiated manually.
遇險中繼呼叫應以人工啟動。
- CS=Coast Station RCC=Rescue Co-ordination Center
CS 係指海岸電臺 RCC 係指搜救協調中心